



PREVIOUSLY  
 simplyenergy

Mr De Neefe  
427 COLES RD  
WOODFIELD VIC 3715

## Your Electricity Account

### Tax Invoice

Engie (ABN 67 269 241 237) is a partnership comprising IPower Pty Ltd (ACN 111 267 228) and IPower 2 Pty Ltd (ACN 070 374 293)



### Important Update

Simply Energy is now ENGIE. You will see the ENGIE name in all future communications, bills and on our website.

For more information, please contact us or visit [engie.com.au/becoming-engie](https://engie.com.au/becoming-engie)



### Get In Touch

Enquiries and complaints (8:00am-7:00pm Mon-Fri AEST) **13 88 08**  
To report faults or emergencies, call your local distributor AusNet Services (24 hrs) **13 17 99**  
Energy & Water Ombudsman Victoria (EWOV) **1800 500 509**  
Website **[engie.com.au/home/contact](https://engie.com.au/home/contact)**



### Customer Number

**25857876**

### Account Number

**26000622**

Invoice Number 65015335  
Issue Date 08 September 2024  
Site Address 427 COLES RD, WOODFIELD VIC 3715  
National Metering Identifier (NMI) 6305589046 4



### Account Summary

Total amount of your last bill \$42.60  
Payment received - Thank You \$42.60  
Balance brought forward \$0.00



### Total amount payable

with discount

**\$0.00**

(incl. GST)

### DUE DATE

### ACCOUNT BALANCE

**-\$32.40**



### How to Pay

Payment Not Required



#### Credit Card Payments

Visit [engie.com.au](https://engie.com.au) or call **1300 654 238** to pay by Visa, Mastercard or Amex.

Ref: 260006226



#### PayPal

Visit [engie.com.au](https://engie.com.au) to pay with PayPal.



#### Post Billpay

Pay in person at any post office, by phone on **13 18 16** or go to [postbillpay.com.au](https://postbillpay.com.au)

Billpay Code: 2013  
Ref: 0260 0062 2106  
1019 5005



#### Direct Debit

Automatically pay on the due date by setting up direct debit. For details and an application form, visit [engie.com.au](https://engie.com.au) or call **13 88 08**.



#### Phone & Internet Banking

Contact your bank or financial institution to make this payment from your cheque, savings, credit card or transaction account.

More info:

[www.bpay.com.au](https://www.bpay.com.au)

Biller Code: 606327  
Ref: 0260 0062 26



#### By Mail

Post payment slip with your cheque made payable to:

Engie,  
GPO Box 367  
Melbourne VIC 3001

Please do not staple or attach the payment slip.

Depending on the payment method you use, fees may apply. For more information please visit [www.engie.com.au/help-centre/fees-charges](https://www.engie.com.au/help-centre/fees-charges)

**Centrepay payments:** Eligible residential customers can contact Centrelink to arrange regular Centrepay deductions. Centrepay reference number: 555 062 444 C.

## Useful information

The Australian Government and your State Government are supporting customers to reduce bills. Check the 'Understand Your Bill' section to see if you have received a rebate or concession. More information at [energy.gov.au](https://energy.gov.au)

The Victorian Default Offer is a reasonably priced electricity offer set by Victoria's independent regulator. Contact us on **1800 370 600** to discuss the suitability of this plan for you.

**MyENGIE**

**Pay Now**



**Interpreter Service 1300 408 265** - 8:00am to 7:00pm, Mon – Fri AEST

**TTY Service 1800 555 630** - 8:00am to 600pm, Mon - Fri AEST

Per il servizio interpreti chiamare il numero indicato sopra.

للحصول على خدمات الترجمة الشفهية إتصل بالرقم المدرج أعلاه.

Για υπηρεσία διερμηνέων, τηλεφωνήστε στον παραπάνω αριθμό.

Para comunicarse con el servicio de interpretación llame al número indicado arriba.

Muốn liên lạc với sở thống dịch, xin vui lòng gọi số điện thoại trên đây.

如需傳服務，請相以上龙括。

如需傳服務，請相以上龙括。

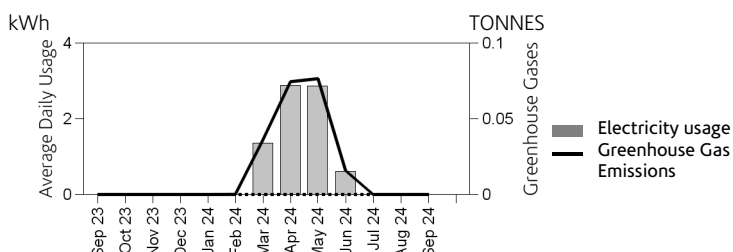
## Meter Read Type

Based on an actual meter read. Your next scheduled meter read is 30 September 2024.

### Consumption Profile

For more information and tools on saving energy, visit [compare.energy.vic.gov.au](https://compare.energy.vic.gov.au)

Total greenhouse emissions for this bill: 0.00 tonnes



### Electricity Usage Benchmarks

Compare your electricity usage with similar households in your area.

**Electricity Usage (kWh)**

**Average usage by number of people in household**

Average daily cost: **\$1.05 Cr**

Average daily usage: **0.00 kWh**

Same time last year: **0.00 kWh**

To find out more about how the average household energy usage is calculated visit [compare.energy.vic.gov.au](https://compare.energy.vic.gov.au)

For more information and tools on saving energy, visit [compare.energy.vic.gov.au](https://compare.energy.vic.gov.au)



0 kWh



366 kWh



555 kWh



934 kWh

### Summary of Your Plan

**Plan name** Simply RACV Plus 45/30

**Renewable sources & carbon offsets** N/A

**Benefit** N/A

**Benefit change date** 09 MAY 2026

#### Concession Information

You may be entitled to a VIC State Government Concession, rebate or relief scheme. For information on how to apply or to change your details call us on **13 88 08**.

#### Payment Assistance

If you are unable to pay this invoice in full, you may be eligible for payment assistance, such as:

- An extension of the due date of your invoice for one billing cycle;
- A payment plan under which you pay for your energy use in advance; or
- A payment plan which will enable you to pay your outstanding balance and expected future usage via fixed, regular instalments over an agreed period.

Please call us on **1800 065 475** to discuss these options or other options that may be available to you.

### Understand Your Bill

Supply Service Charges		Unit Price	Amount (incl. GST)
Supply Charges	( 31 Days )	1.374230	\$42.60
Other Charges		Unit Price	Amount (incl. GST)
Australian Government Energy Bill Relief			\$75.00 Cr
Discounts			Amount (incl. GST)
Total for Electricity Products			\$32.40 Cr (incl. GST)
GST standard rate @ 10.00%			\$3.87